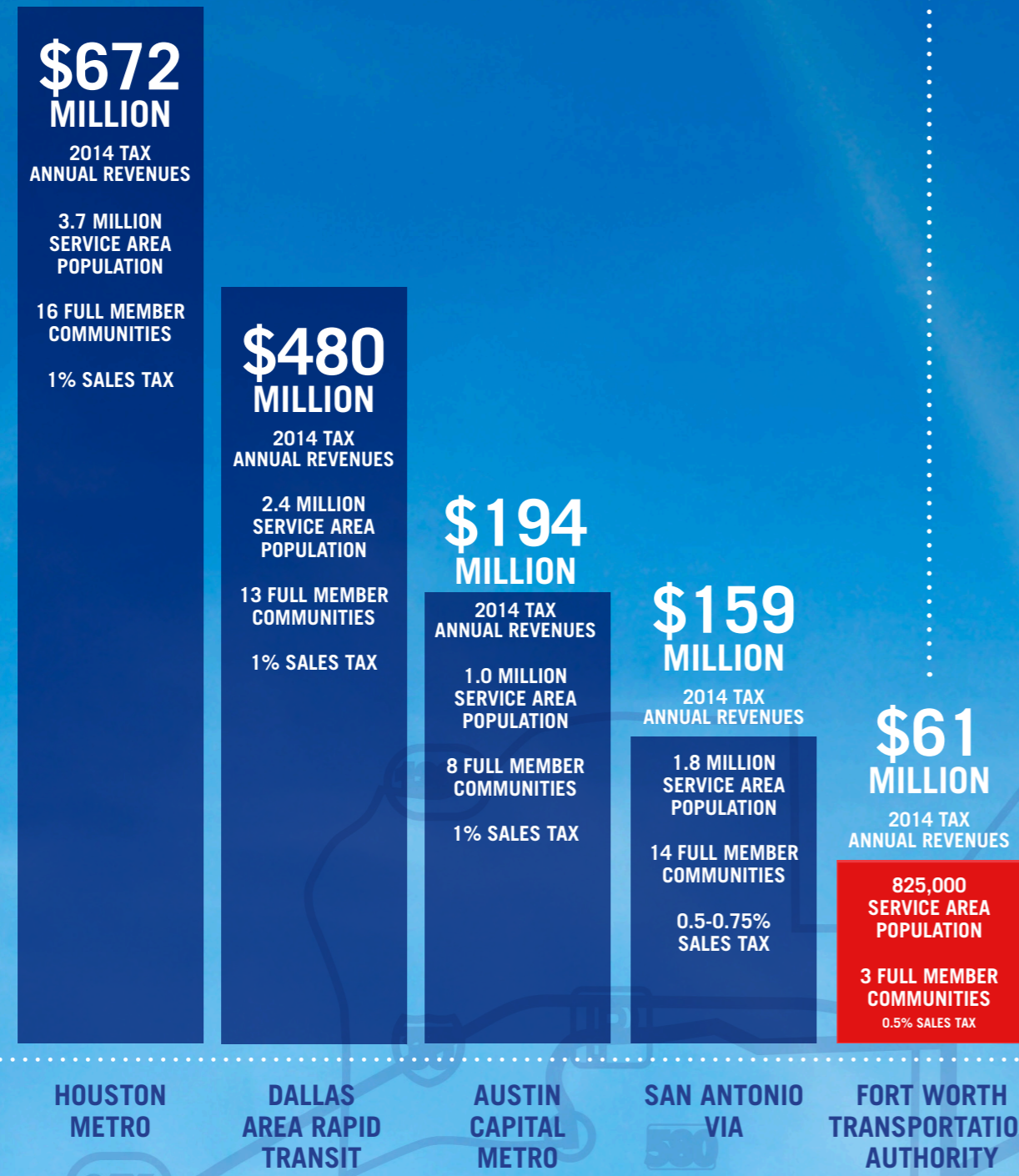


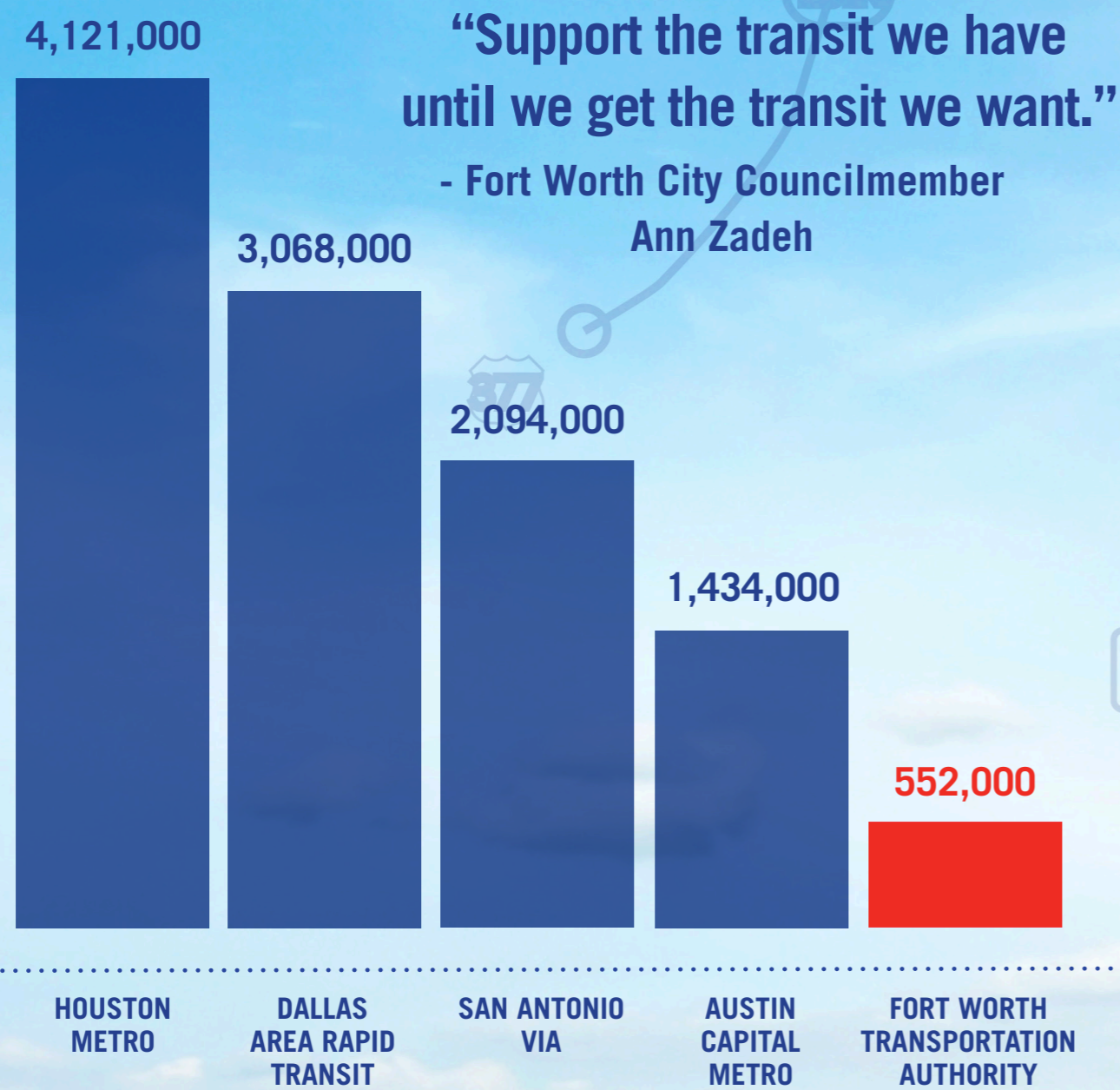
AMONG MAJOR TRANSIT SYSTEMS IN TEXAS, FWTA RECEIVES THE LEAST AMOUNT OF LOCAL FUNDING EACH YEAR...



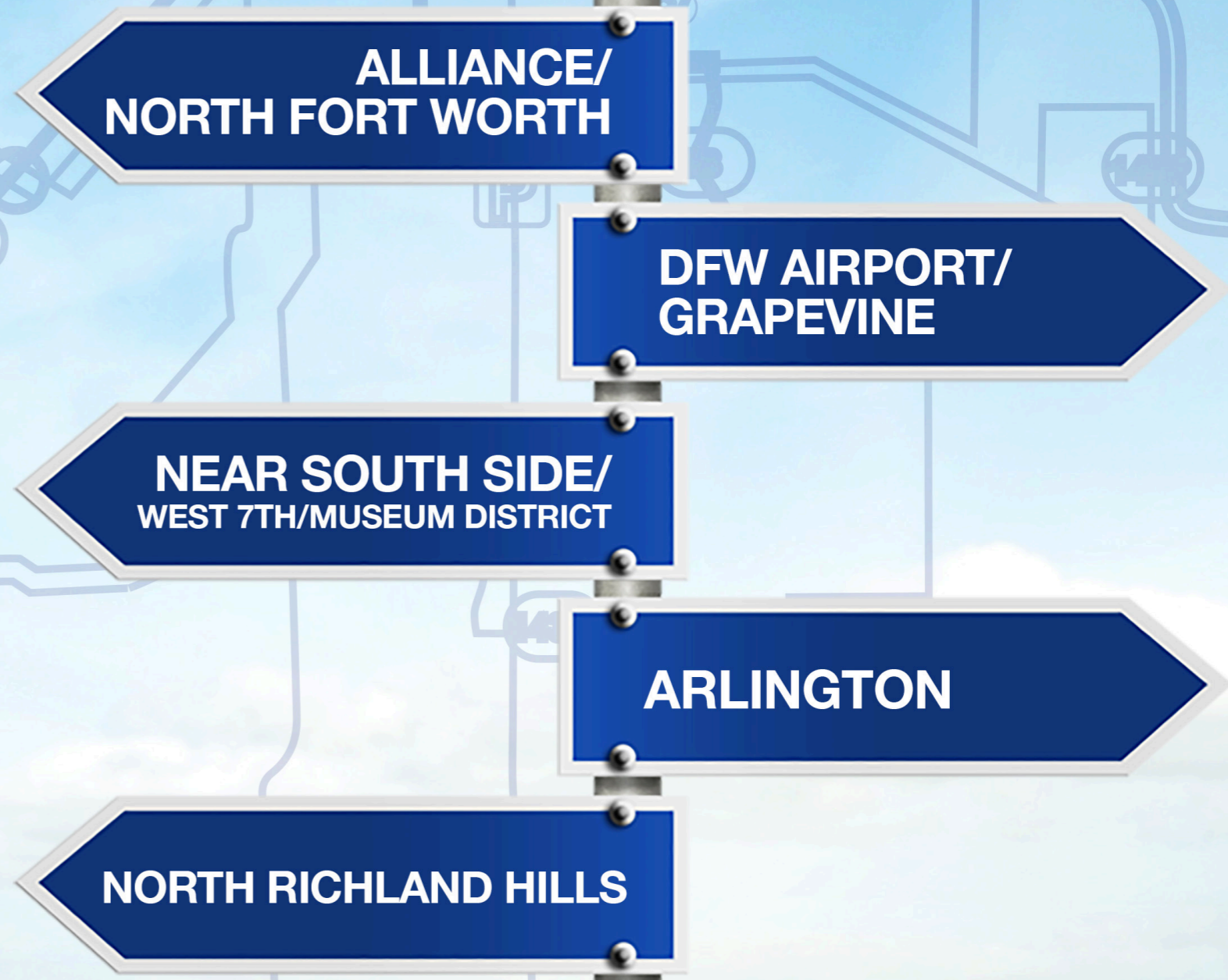
MORE PLACES.
MORE PEOPLE.
MORE
POSSIBILITIES.



...AND PROVIDES THE LEAST AMOUNT OF ANNUAL BUS SERVICE HOURS



“Support the transit we have until we get the transit we want.”
- Fort Worth City Councilmember Ann Zadeh





THE FUTURE OF TRANSIT IN TARRANT COUNTY

"Enhanced and expanded transit services will not only make it more convenient for our citizens to get around, but will be a critical strategy for meeting the mobility needs of our region's growing population." - Fort Worth Mayor Betsy Price

Fort Worth Transportation Authority (FWTA) Board of Directors initiated a yearlong process to develop a Transit Master Plan to meet the mobility needs of our region. Active community involvement played a big role in the planning process.

Recently accepted by the FWTA Board of Directors, the Transit Master Plan is consistent with the City of Fort Worth's Master Thoroughfare Plan, North Central Texas Council of Governments' 2040 Mobility Plan and other planning initiatives. The board is committed to pursuing the vision and goals, and to work with funding partners to prioritize plan elements.

The Transit Master Plan is designed to provide convenient, competitive and attractive transit service that supports stronger and healthier communities. With a focus on the next five years, the Transit Master Plan presents an opportunity to create an inviting transit system that will offer more places for more people - and more possibilities.

MEETING THE NEEDS OF OUR GROWING COMMUNITY

Tarrant County is one of the fastest growing places in Texas and in the nation. **The county's population is expected to increase 40 percent by 2040, from 1.8 million to 2.6 million.** Rapid growth among citizens who are 65 years or older as well as young adults and Millennials - who are increasingly seeking alternatives to single-occupancy vehicles - will generate even greater demand for transportation options in our region.

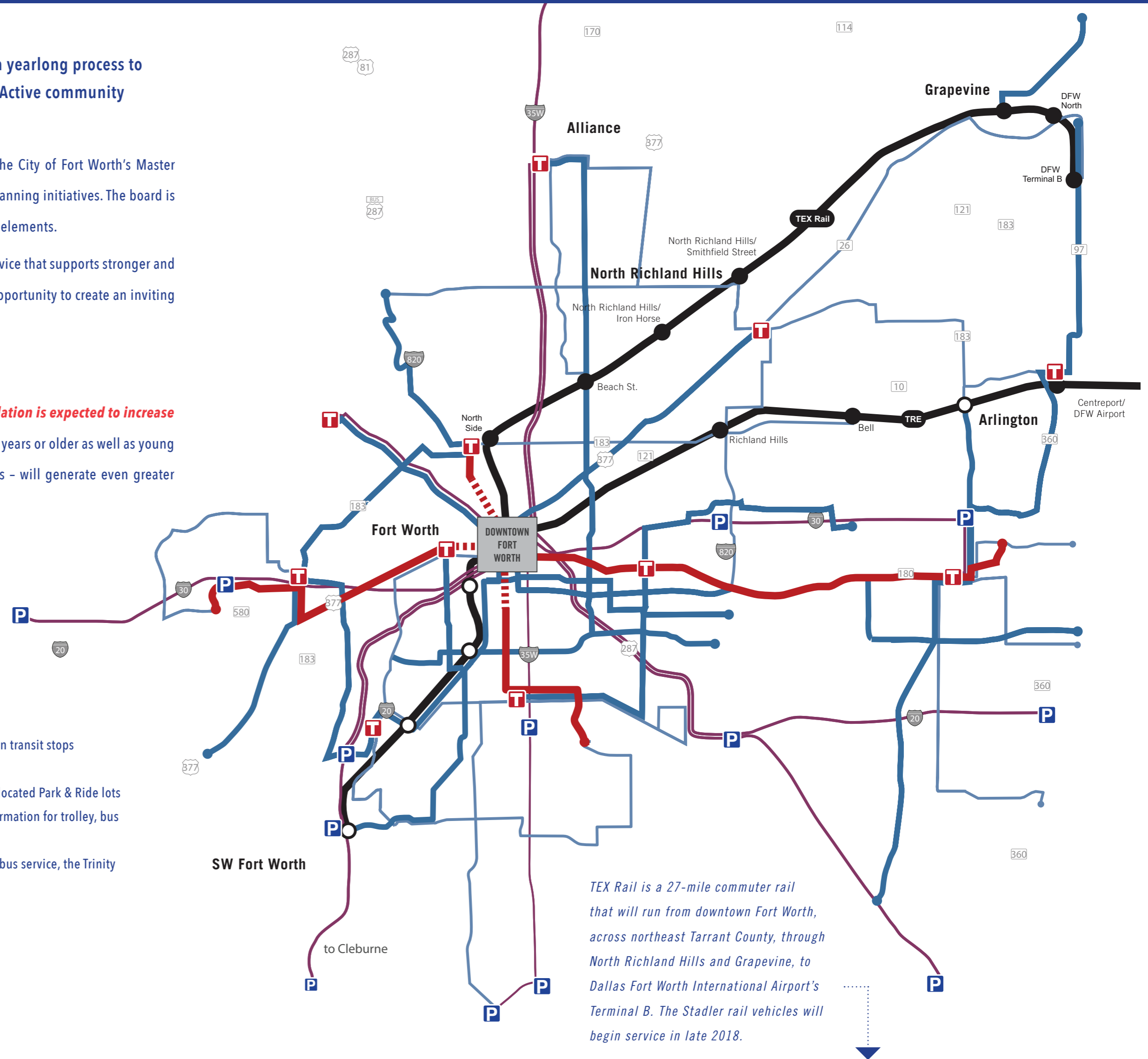
County's projected population increase from 2015 - 2040

2015 | 1.8 million

2040 | 2.6 million

FIVE-YEAR RECOMMENDATIONS TO ENHANCE TRANSIT

- Improve existing service and expand service to new areas
- Develop a Frequent Transit Network
- Develop premium services, such as more rail and better bus services
- Develop outlying transit centers
- Improve and expand express and regional services
- Provide better passenger facilities and improve access to transit
- Shorten the distance between transit stops and destinations
- Develop more conveniently located Park & Ride lots
- Provide better real-time information for trolley, bus and rail passengers
- Unified branding to include bus service, the Trinity Railway Express and TEX Rail



FWTA DELIVERS REAL-TIME ARRIVAL DETAILS VIA APP

Molly the Trolley and bus passengers can get real-time travel information with the Fort Worth Transportation Authority's app, NextBus. The interactive app lets riders choose their route and then check to see what time the next bus or trolley is arriving. NextBus is available at www.NextBus.com and on mobile devices.



Go to NEXTBUS.COM. It's that easy!

LEGEND

- Bus Rapid Transit (BRT)
- BRT or Streetcar
- Rapid Bus
- Frequent Peak Local
- Commuter Rail
- Transit Center
- Park-and-Ride Lot
- Existing/Committed Rail Station
- New Rail Station
- Express Route

Frequent All Day routes will be the most likely candidates for Rapid Bus service; however, Rapid Bus service could also be provided on Frequent Peak routes.

Although not shown on the map, there would also be a comprehensive network of local routes and services.

WWW.TMASTERPLAN.ORG